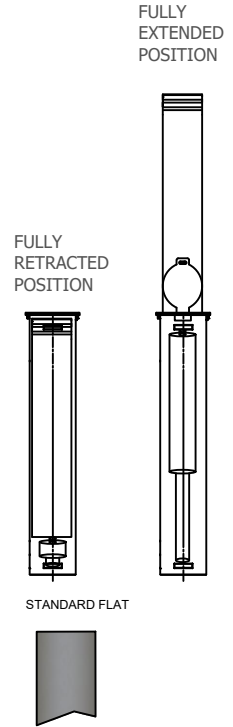
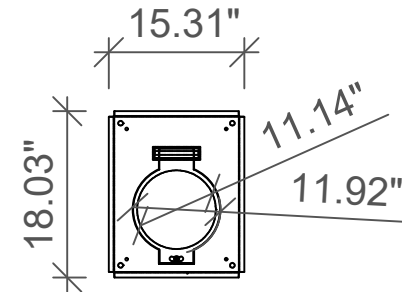
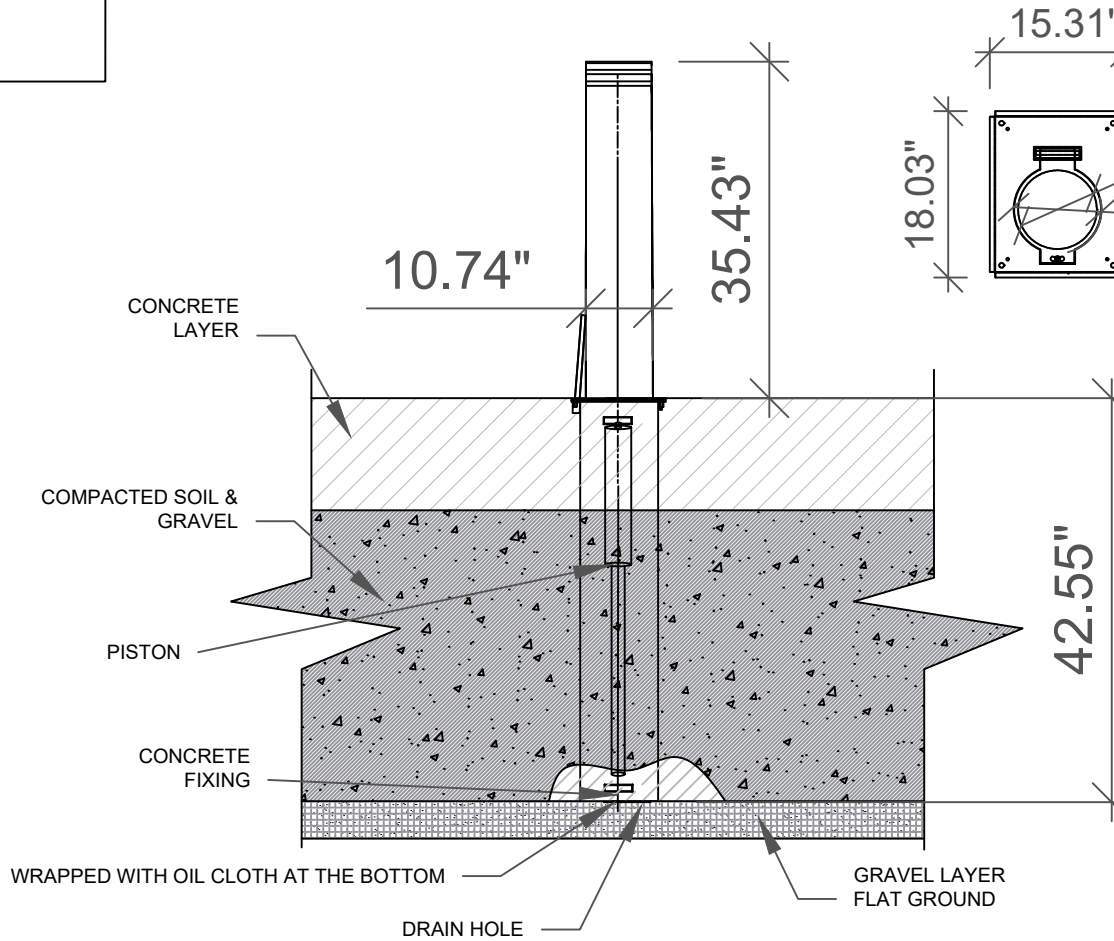
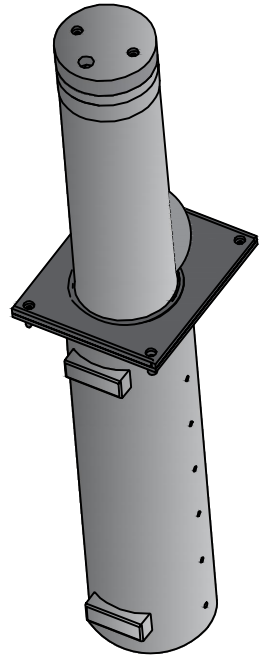


# 1-800-BOLLARDS

**The Bollard Experts**

- 10" ASSISTED LIFT BOLLARD MATERIAL
- CARBON STEEL
  - MACS10000B (BLACK)
  - MACS10000Y (YELLOW)
- STAINLESS STEEL SELECTION
  - TYPE 304
  - TYPE 316
- STAINLESS STEEL BOLLARD FINISH
  - POLISHED #4

REVISIONS			
LTR	DESCRIPTION	DATE	APPVD
COMMENTS			
SPECIFICATIONS			
HEIGHT: 35.43"			
DIAMETER: 10.74"			
WALL THICKNESS: 0.275"			



**NOTES:**  
 1. REFERENCE TO BE COMPLETED IN ACCORDANCE WITH MANUFACTURER'S SPECIFICATIONS.  
 2. DO NOT SCALE DRAWING.  
 3. THIS DRAWING IS INTENDED FOR USE BY ARCHITECTS, ENGINEERS, CONTRACTORS, CONSULTANTS AND DESIGN PROFESSIONALS FOR PLANNING PURPOSES ONLY. THIS DRAWING MAY NOT BE USED FOR CONSTRUCTION.  
 4. ALL INFORMATION CONTAINED HEREIN WAS CURRENT AT THE TIME OF DEVELOPMENT BUT MUST BE REVIEWED AND APPROVED BY THE PRODUCT MANUFACTURER TO BE CONSIDERED ACCURATE.  
 5. CONTRACTOR NOTE: FOR PRODUCT AND COMPANY INFORMATION VISIT [www.CADdetails.com/inf](http://www.CADdetails.com/inf) AND ENTER REFERENCE NUMBER 904927.

APPLICATION		PRODUCT SUB LINE	APPROVED BY	RELEASE DATE
NEXT ASSY	USED ON	1-800-BOLLARDS, Inc.		
		10 Hughes Suite A105		
		Irvine, CA 92618		
		PHONE: 1-800-BOLLARDS		
		WEB: <a href="http://www.1800BOLLARDS.COM">www.1800BOLLARDS.COM</a>		
		EMAIL: <a href="mailto:INF@1800BOLLARDS.COM">INF@1800BOLLARDS.COM</a>		

BOLLARD, SEMI AUTO